



# Section K

## Horticulture

<b>Stewards:</b>	A Hayman, M Ford, J Cohen, H Mahony, T Graves
<b>Contact Details:</b>	0467555308
<b>Entry Fee Open Section:</b>	\$1 per entry up to 10 entries, 50c every entry after
<b>Entry Fee Junior and Juvenile Sections:</b>	Free Entry
<b>Entries taken</b>	<b>Thursday prior to show</b>
<b>Entries staged</b>	<b>Before 10.30 am Friday</b>
<b>Entries Collected:</b>	Sunday after Show 10am - 12 noon
<b>Prizes (Open Section Only):</b>	1st - \$3.00; 2nd - \$1.50
<b>Prizes Junior and Juvenile Sections:</b>	Card and Ribbon Only

**Grand Champion Exhibit Overall  
Encouragement Award  
Ray Graham Most Successful Exhibitor Floral Art**

### Conditions of Entry

1. Plastic Green Vases available ONLY. BYO any other vase or bottle
2. Entries may be staged on Thursday Evening by arrangement with the steward.
3. The Judge has the right to disqualify an entry that does not conform to the Schedule.
4. The Judge's decision is final.
5. All Exhibits must be grown by the exhibitor except in Floral Art Classes
6. **No exhibitors or spectators are permitted in pavilion during judging.**
7. All exhibits to be arranged at the show by the exhibitor.
8. All entries in Junior & Juvenile section must be arranged at the show.
9. A Novice is someone who has not won a first place in the Open Horticulture section at any agricultural show and does not use any horticulture or floral art as a form of generating their primary income.
10. All Prize money must be collected from the Treasurer Sunday. No prize money will be posted.

## Dahlia Sizes (Australia Dahlia Council 1998)

1. Giant 260mm & over
2. Large 210mm & under 260mm
3. Medium 160mm & under 210mm
4. Small 120mm & under 160mm
5. Miniature under 120mm
6. Formal, Informal, Semi Decorative Dahlia, Cactus, Semi Cactus, Incurved Cactus, & Fimbriated Dahlia come in all five sizes
7. Ball Dahlias come in small or miniature sizes
8. Pompon Dahlias are under 50mm
9. Waterlily, Collerette, Anemone, Orchid, Stellar and Single Dahlias are under 160mm

## Judging Definitions

1. X means 1 bloom or cut to a vase
2. XXX means 3 cuts or blooms to a vase.
3. NND means “not necessarily distinct”.
4. In all cases where the word “DISTINCT” is used it means DIFFERENT
5. A bowl shall is a receptacle, which is wider than its height or which holds less than 1 litre of water
6. A VASE is a receptacle, which is higher than its width or holds more than 1 litre of water.
7. In all miscellaneous flower sections, where no standards are specified, blooms shall be shown on stems at least 150mm above the receptacle.
8. EMBELLISHMENT means any part of any plant but not another flower.
9. ARTIFICIAL ADORNMENT means any manufactured article, such as polished stones, ribbons, drapes, figurines etc.
10. ARRANGEMENT means any container of flower, flowers, foliage and/or berries allowed in the decorative section.
11. Formal arrangements may be arranged before commencement of show judging.
12. Floral Art, any Embellishments or Artificial Adornments allowed unless otherwise stated.
13. Standard Unit means one flower over 160mm in a vase or three flowers of the same variety under 160mm in one vase.

## Classes

### Floral Art

1. Arrangement of artificial flowers
2. Best Arranged Bowl
3. As I Like It
4. 3 Gent's Buttonholes
5. Red and White
6. Arrangement Australian Natives
7. Japanese Arrangement
8. Arrangement of Roses
9. Arrangement using One Flower
10. Decorated Float Bowl
11. Foliage Arrangement



### **\*Champion Exhibit - Floral Art**

**Ray Graham Memorial for the Most Successful Exhibitor in Floral Art**

### Miscellaneous Section

12. Pansies 6 Blooms Any Container
13. Geraniums 3 Cuts NND
14. Geranium 1 Cut
15. Collection of Fuchsias (Own Container)
16. 3 Fuchsias (Distinct)
17. 3 Fuchsias (Double)
18. Fuchsias 6 Stems in 1 Vase
19. Marigolds 3 Blooms (Large) 3 Per Vase
20. Marigolds 3 Blooms (Petite) 3 Per Vase
21. Flowers 1 Vase 6 cuts (Distinct)
22. Hydrangea 1 Bloom
23. Petunias 6 (Single)
24. Petunias 6 (Double)
25. Nasturtiums Collection with Own Foliage
26. Any other bloom not mentioned- 3 Cuts in 1 Vase



### **\*Champion Exhibit – Miscellaneous**

### Roses

27. 3 Roses NND 1 vase
28. 3 Roses Distinct 1 vase
29. 1 Red Rose
30. 1 Pink Rose
31. 1 White Rose
32. 1 Bicolour Rose
33. 1 Rose Full Bloom
34. 1 Cut My Favourite Rose
35. 1 Rose Any Other Colour Not Specified
36. 1 Cut Rose Floribunda
37. Roses Bud to Full Bloom 4 Stages 4 Cuts 1 vase



continue next page

- 38. 1 vase Miniature Roses 3 Cuts
- 39. Container Roses (No more than 6 Blooms)

**\*Champion Exhibit - Roses**

**Bonsai**

- 40. 1 Bonsai any style under 30cm
- 41. 1 Bonsai any style over 30cm
- 42. 1 Bonsai group planting of three or more trees
- 43. 1 Bonsai Saiki Landscaped using rocks



**\*Champion Exhibit - Bonsai**

**Pot Plants**

- 44. Flowering Pot Plant in Bloom
- 45. 1 African Violet
- 46. Foliage Pot Plant
- 47. Maiden Hair Fern
- 48. Fern Any Type
- 49. Container of Succulents
- 50. 1 Succulent
- 51. 1 Cactus
- 52. Cactus garden



**\*Champion Exhibit - Pot Plants**

**Novice Section**

- 53. 3 Geraniums
- 54. 1 Rose Full Bloom
- 55. 1 Rose Any Colour
- 56. 1 Dahlia
- 57. Floral Art Arrangement in any Container

**\*Champion Exhibit - Novice Section**



## Dahlias

### Decorative Dahlias

- 58. 1 Decorative Dahlia over 160mm
- 59. 3 Small Decorative Dahlias (120-160mm) NND 1 vase
- 60. 1 Small Decorative Dahlia (120-160mm)
- 61. 3 Miniature Decorative Dahlias (Under 120mm) NND 1 vase
- 62. 1 Miniature Decorative Dahlia (Under 120mm) NND



### **\*Champion Exhibit - Decorative Dahlias**

### Cactus Dahlias

- 63. 1 Cactus Dahlia over 160mm
- 64. 3 Small Cactus Dahlias (120 –160mm) NND 1 vase
- 65. 1 Small Cactus Dahlia (120 –160mm)
- 66. 3 Miniature Cactus Dahlias (Under 120mm) NND 1 vase
- 67. 1 Miniature Cactus Dahlia (Under 120mm)
- 68. 1 Fimbriated Cactus Dahlia (over 160mm)

### **\*Champion Exhibit – Cactus Dahlias**

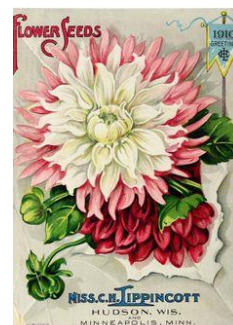
### Waterlily Dahlias

- 69. 3 Waterlily Dahlias (Under 160mm) Standard Unit
- 70. 3 Waterlily Dahlias (Under 160mm) NND 1 vase
- 71. 1 Waterlily Dahlia (Under 160mm) in float bowl

### **\*Champion Exhibit - Waterlily Dahlias**

### Any Other Type Dahlias

- 72. 3 Collerette Dahlias (Under 160mm) NND 1 vase
- 73. 3 Collerette Dahlias (Under 160mm) Standard Unit
- 74. 1 Collerette Dahlia (Under 160mm)
- 75. 3 Miniature Ball Dahlias (Under 120mm) NND 1 vase
- 76. 1 Miniature Ball Dahlia (Under 120mm)
- 77. 3 Pompon Dahlias (Under 50mm ) NND 1 vase
- 78. 1 Pompon Dahlia (Under 50mm)
- 79. 3 Orchid Dahlias (Under 160mm) NND 1 vase
- 80. 1 Orchid Dahlia (Under 160mm)
- 81. 3 Stellar Dahlias NND 1 vase
- 82. 3 Anemone Dahlias NND 1 vase
- 83. 3 Single Dahlias NND 1 vase



### **\*Champion Exhibit any other type of Dahlia**

### Grand Champion Dahlia



**Junior Horticulture** – Up to (and including) 11 Years of Age

- 84. Fruit & Vegetable Novelty Boys
- 85. Fruit & Vegetable Novelty Girls
- 86. Decorated Egg Cup Boy
- 87. Decorated Egg Cup Girls
- 88. Best Arrangement in Cup & Saucer Girls
- 89. Best Arrangement in Cup & Saucer Boys



**Junior Champion Ribbon**

**Juvenile Horticulture** -12 Years Up to (and including) 17 Years of Age

- 90. Arrangement of Three Flowers & Foliage
- 91. Decorated Egg Cup
- 92. Fruit & Vegetable Novelty
- 93. Best Arrangement in Cup & Saucer
- 94. Decorated Basket



**Juvenile Champion Ribbon**

